



Navy Command

Fleet Operations
CTF 311
Maritime Operations Centre
Northwood Headquarters
Sandy Lane
NORTHWOOD
Middlesex HA6 3HP

Telephone: 01923 956362
E-mail: NAVYOPS-SMSSN@mod.uk

OPS/311/NTF01/14

See Distribution

14 March 2014

NOTICE TO FISHERMEN 01/14

EXERCISE JOINT WARRIOR 141 – 31 MARCH – 10 APRIL 2014

1. Notice to Fishermen 01/14 is forwarded. It contains important information about Exercise Joint Warrior (JW) 141 taking place from 31 March until 10 April 2014. It is requested that it be distributed as widely as possible throughout the fishing and yachting community.
2. Your attention is particularly drawn to the likelihood of challenges on IMM VHF radio by ships to allow the identification of vessels and their intentions in order to deal with a simulated potential terrorist threat (see Part 1 paragraph 2).

Signed on original

J Fillmore
Lieutenant Commander Royal Navy
COMOPS

Enclosure:

1. CTF 311 NOTICE TO FISHERMEN 01/14.

Distribution:

External:

COMFASFLOT
NCHQ PORTSMOUTH

MFP CROMBIE
OIC BUTEC (e-mail)
MCM 1
MCM 2
JTEPS (Attention: Lt Cdr POMFRETT RN) (e-mail)
Hydrographic Office (RNW Section) (e-mail)
MRCC Clyde (e-mail)
MRSC Stornoway (e-mail)
MRSC Liverpool (e-mail)
MRSC Belfast (e-mail)
The Scottish Fisheries Protection Agency HQ (e-mail)
The Department of Agriculture, Fisheries and Forestry, Isle of Man Government (e-mail)
Dept of Agriculture for Northern Ireland (Fisheries Division) (e-mail)
SFPA Ayr (e-mail via SFPA HQ)
SFPA Ullapool (e-mail via SFPA HQ)
SFPA Campbeltown (e-mail via SFPA HQ)
SFPA Oban (e-mail via SFPA HQ)
SFPA Mallaig (e-mail via SFPA HQ)
SFPA Kinlochbervie (e-mail via SFPA HQ)
SFPA Lochinver (e-mail via SFPA HQ)
SFPA Stornoway (e-mail via SFPA HQ)
The Scottish Fishermen's Federation (e-mail)
The Scottish Pelagic Fishermen's Association Ltd (e-mail)
The Scottish White Fish Producers Organisation
Manx Fish Producers Organisation Ltd
The Clyde Fishermen's Association (e-mail)
Mallaig & North West Fishermen's Association (e-mail)
Shetland Fishermen's Association
Western Isles Fishermen's Federation
West of Scotland Fish Producers Organisation (e-mail)
Anglo-North Irish Fish Producers Organisation Ltd (e-mail)
Ullapool & Assynt Boatowners' Association (e-mail)
Anglo Scottish Fish Producers Organisation Ltd
NI Fish Producers Organisation Ltd (e-mail)
Portree Fisheries Office (e-mail)
Gairloch Harbour Master (e-mail)
Aultbea Post office
Forth Ports PLC
Durness Community Council – Chairman (e-mail)
JNCC MPA Stakeholder Liaison Officer (e-mail)

CTF 311
NOTICE TO FISHERMEN 01/14
PART 1

1. NATO ships, submarines and aircraft will conduct Exercise Joint Warrior (JW) 141 within the Scottish Exercise Areas and those other areas listed in paragraph 3 below. The exercise will be held between 31 March until 10 April 2014 and will involve the limited use of active sonar. Specific details of where activity is forecast to take place will be published on www.qhm.mod.uk/clyde and posted to some fishermen, ferry operators and environmentalists by the Joint Tactical Exercise Planning Staff (JTEPS). Daily activity will also be available in the daily Coastguard SUBFACTS broadcast.

2. In light of ever changing threats to our Armed Forces, military ships maintain a detailed plot of maritime activity in their vicinity, which includes establishing the identity of small Fishing Vessels. This can be achieved visually from helicopters or by challenges on IMM VHF radio by ships. Mariners are advised that warships from various Allied Nations will be conducting such reconnaissance and challenges. Areas likely to be affected are the Clyde, North Channel, South of the Sea of Hebrides, the Sea of Hebrides, the Little Minch, North Minch, the area near Cape Wrath, Loch Eriboll and the Outer Hebrides. Mariner's co-operation during this time would be much appreciated. A small number of contracted civilian vessels including high speed craft will be operating in the vicinity of The Minches in support of this training task. Every effort will be made to avoid interference to fisheries.

3. The following area bounded by the listed points is promulgated for JW 141:

ARDNAMURCHAN POINT TO TIREE

56 00N - 007 40W

56 00N - 012 00W

61 00N - 012 00W

61 00N - 000 000E

55 00N - 000 00E

55 00N - 001 25W

ALONG ENGLISH AND SCOTTISH COAST NORTH AND WEST TO LEITH, LEITH TO 5605N 00310W, SCOTTISH COAST ANTI-CLOCKWISE VIA LOCH ERIBOLL TO CAPE WRATH. ALONG WEST COAST OF SCOTLAND TO ARDNAMURCHAN POINT.

FROM 310100A MARCH UNTIL 101600A APRIL 2014

CTF 311 NOTICE TO FISHERMEN 01/14

PART 2

1. Mine Counter Measures (MCM) vessels will be conducting minehunting exercises in and around Loch Ewe, The Minch, Gruinard Bay and Ullapool in support of Exercise Joint Warrior (JW) 141 during the period 31 March until 10 April 2014. Additionally there will be activity off Campbeltown on the established exercise minefield and surveying operations in the Clyde approaches. Investigation of bottom contacts will be by remote controlled submersible vehicles and divers.

2. The following MCM vessels will participate in Ex JW 141:

<u>Name</u>	<u>Nationality</u>	<u>Pennant No</u>
FS ANDROMEDE	French	M643
BNS BELLIS	Belgian	M916
HMS CHIDDINGFOLD	British	M37
HMS GRIMSBY	British	M108
HMS LEDBURY	British	M30
HMS PENZANCE	British	M106
HNLMS ZIERZIKKEE	Dutch	P842

3. Inert ground mines are in the following areas:

a. LOCH EWE (see chartlet 1)

All areas within Loch Ewe between latitudes 57 52.28N and 57 49.20N.

b. MINCHES

Along the following line:

- A. 57 32.98N 006 52.06W
- B. 57 41.98N 006 35.06W
- C. 57 50.18N 006 16.06W

c. CARN SKERRIES/HORSE ISLAND (see chartlet 1)

- A. 57 57.94N 005 20.08W
- B. 57 57.55N 005 20.57W
- C. 57 58.44N 005 23.08W
- D. 57 58.84N 005 22.58 W

d. EILEAN DUBH (see chartlet 1)

- A. 57 59.23N 005 25.60W
- B. 57 58.85N 005 25.50W
- C. 57 58.75N 005 26.84W
- D. 57 59.60N 005 26.90W

e. PRIEST ISLAND (SOUTH) (see chartlet 1)

- A. 57 56.91N 005 31.48W

- B. 57 56.50N 005 31.82W
- C. 57 56.83N 005 33.32W
- D. 57 57.27N 005 33.00W

f. GRUINARD BAY APPROACH (see chartlet 1)

- A. 57 56.24N 005 28.57W
- B. 57 55.80N 005 28.91W
- C. 57 56.25N 005 30.70W
- D. 57 56.68N 005 30.46W

g. GRUINARD BAY (see chartlet 1)

- A. 57 54.00N 005 29.61W
- B. 57 52.80N 005 29.61W
- C. 57 52.80N 005 30.80W
- D. 57 53.02N 005 30.80W
- E. 67 53.02N 005 30.00W
- F. 57 54.00N 005 30.00W

h. BROAD BAY (see chartlet 4)

- A. 58 16.60N 006 14.60W
- B. 58 16.60N 006 12.20W
- C. 58 15.40N 006 12.20W
- D. 58 15.40N 006 12.20W

i. LOCH SNIZORT

- A. 57 33.00N 006 25.00W
- B. 57 37.00N 006 25.00W
- C. 57 37.00N 006 29.50W
- D. 57 33.00N 006 29.50W

j. CLYDE APPROACHES

ETTRICK BAY

- A. 55 44.86N 005 13.27W
- B. 55 47.84N 005 12.81W
- C. 55 49.44N 005 08.78W
- D. 55 50.64N 005 08.78W

BRODICK BAY

- A. 55 31.99N 004 54.12W
- B. 55 35.49N 005 06.42W
- C. 55 35.23N 005 08.85W

LAMLASH APPROACH

- A. 55 31.99N 004 54.12W

- B. 55 32.54N 005 04.82W
- C. 55 31.80N 005 07.05W

k. CAMPBELTOWN APPROACHES

- A. 54 50.00N 005 18.06W
- B. 55 15.50N 005 21.36W
- C. 55 18.00N 005 21.01W
- D. 55 22.00N 005 21.46W
- E. 55 26.49N 005 30.76W

4. The planned minelay and recovery programme.

- a. Minelay. No additional mine targets will be put down without further Notice to Fishermen. All the above areas are established exercise areas with existing targets on the sea bed.
- b. Mine recovery. There is no dedicated mine recovery period during JW 141. This will occur throughout the exercise.

5. Minehunters will conduct live firings of mine disposal charges in the following area:

a. MINE DISPOSAL CHARGE FIRING AREA (see chartlet 1)

- A. 57 57.58N 005 33.93W
- B. 57 57.85N 005 33.93W
- C. 57 58.25N 005 31.97W
- D. 57 57.02N 005 31.97W

- b. DIVER PLACED CHARGES FIRING AREA in Loch EWE will take place within a circle, with a radius of 200m, centred on 57 47.900N – 005 38.900W.

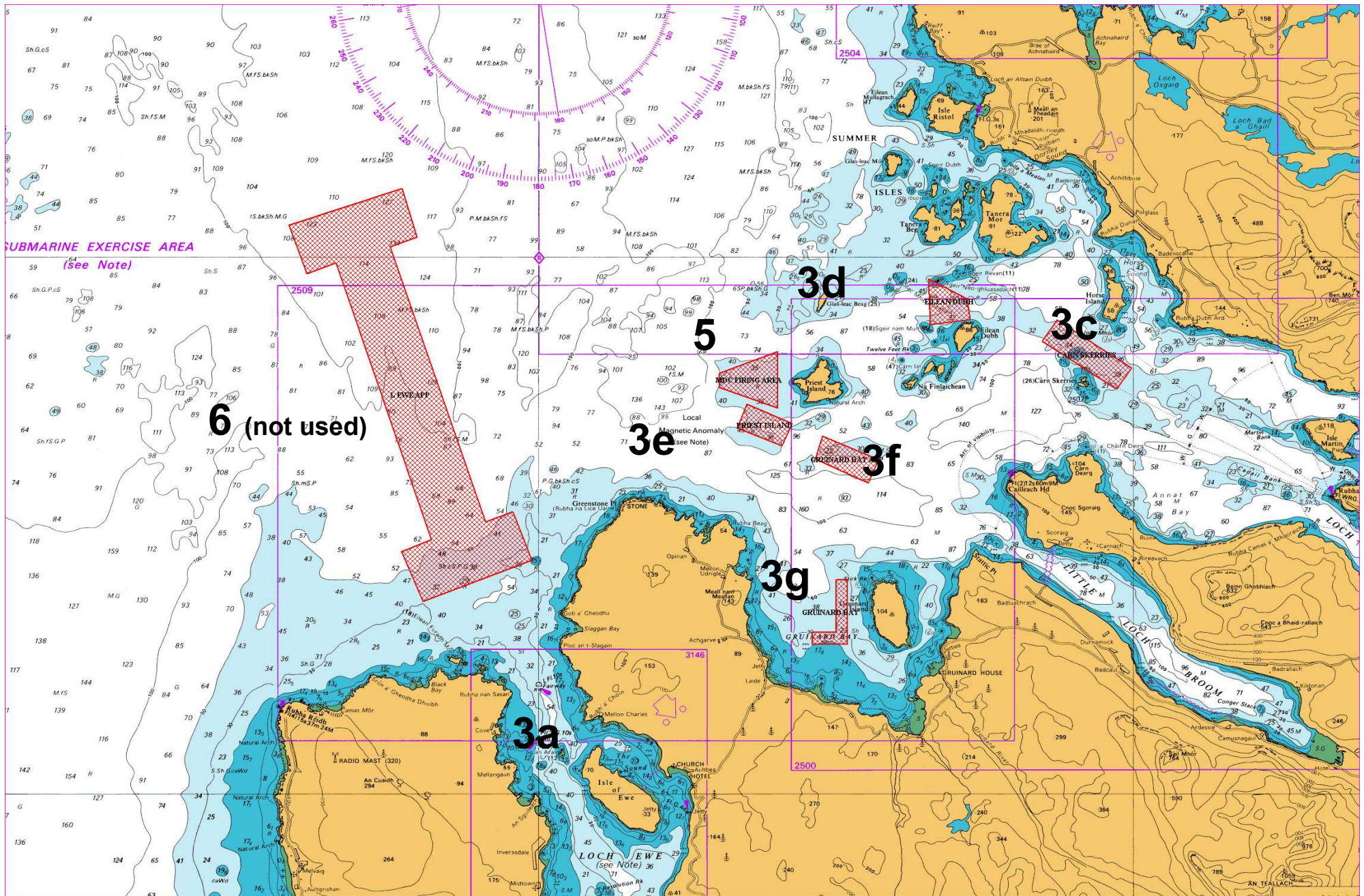
6. No Minesweeping will take place during JW 141.

7. Liaison between the MoD and appropriate fishermen's associations/organisations, in some cases with individual owners/skippers, HM Coastguard and the Scottish Fisheries Protection Agency have been made to use the above areas. Should anyone consider that their organisation/association should be included in this process in future please contact Fleet Ops SSN, (01923 956362), or the Duty Submarine Controller (DSMC) 01923 956366.

8. All participating MCM vessels will be thoroughly briefed on local fishing operations in advance of the exercise and are instructed to make early liaison calls to fishing vessels on VHF. Skippers of fishing vessels operating in the vicinity of these ships are encouraged to talk to them and discuss intentions.

9. If any difficulty is experienced a call should be made to the DSMC at CTF 311 OPS ROOM on the "**Fishermen's Hotline**" number, **01923 956366**. This line is permanently manned.

CHARTLET 1



CHARTLET 2

