



JTEPS JW112

## Joint Tactical Exercise Planning Staff

Northwood Headquarters  
Sandy Lane  
NORTHWOOD  
Middlesex  
HA6 3HP

BT: (01923) 958788  
Fax: (01923) 958779  
E-mail: [jteps-sm-so2@mod.uk](mailto:jteps-sm-so2@mod.uk)

7 September 2011

### JOINT WARRIOR 112 - SUBMARINE, MINEWARFARE AND LIVE FIRING ACTIVITY

1. Joint Warrior (JW) 112, will take place from 3 until 13 October 2011 and will comprise of a programme of exercises conducted by land forces, warships, submarines and aircraft across the UK with the maritime element focussed in the offshore and coastal waters to the north east, north and north west of Scotland. This booklet provides outline information on their scheduled operations as well as details of intended gunnery and aircraft bombing activity at Cape Wrath and in some open ocean areas.
2. The information is correct at the time of going to print but the routine **SUBFACTS** and **GUNFACTS** broadcasts, made during the exercise, will provide updated information.
3. The information provided in this booklet will also be published in Fleet Ops Notice to Fishermen, Defence Training Estate Scotland Notice to Fishermen and Cape Wrath Range Notices. This document is also on the internet at <http://www.qhm.mod.uk/clyde>
4. This booklet contains the following sections:
  - a. Submarine Activity.
  - b. Warship Activity.
  - c. Minewarfare Activity.
  - d. Live Firing and Gunnery Activity.
  - e. Denial GPS Services.
  - f. Unexploded Ordnance Advice.
5. The warships taking part have been instructed to offer fishing vessels every assistance in their dealings with exercise activity, especially when in the vicinity of submarines or participants conducting live firing. You are invited to contact them as required to ensure that our two activities do not come into conflict.

[www.secret-bases.co.uk/secret3.htm#joint-warrior](http://www.secret-bases.co.uk/secret3.htm#joint-warrior)

6. Throughout JW 112 the following points of contact are available to attend to any immediate problems or questions:

Duty Submarine Controller

01923 956366

Joint Warrior Duty Controller

01436 674321 ext. 4372

HM Coastguard at Clyde, Stornoway and Aberdeen can also contact my staff directly and will relay information if necessary.

7. If you have any queries, problems, or suggestions as to how JTEPS can improve this booklet, please do not hesitate to contact my Staff Officer Submarines at the above address.

P J Titterton OBE  
Captain Royal Navy  
Director JTEPS

## Submarine Activity

1. The Submarine Activity Grid on the following page shows the areas and time periods where submarine activity associated with Joint Warrior is forecast. Please note that other submarines that are not part of the exercise may transit the areas north west of Scotland; their activity is not covered in this brief. The daily SUBFACTS broadcast by the Coastguard will provide notification of the actual areas where all submarine activity is taking place. During Joint Warrior, in order to keep the SUBFACTS broadcast short, a number Scottish Exercise Areas are grouped together. The groupings are shown in the chartlet and table in this section.

2. Communications can be established with submarines during JW, when they are surfaced or at periscope depth, on VHF Ch 16 (working Ch 73). In the event that they are operating with warships, one of the warships will have been detailed to act as the Fishing Vessel Safety Ship (FVSS) in accordance with the Code of Practice. The FVSS has two overarching duties:

- a. To make fishing vessels aware of submarine activity in their vicinity and to provide information and advice to minimise the risk of interaction.
- b. To provide assistance to the participating submarine in compiling a comprehensive surface picture in order to minimise the risk of interaction with non-exercise vessels.

3. It is usually easier to establish communications with the FVSS than with a submarine. However, any warship in the vicinity may be contacted and asked for a report on any exercises involving submarines which are being conducted in the local area. Alternatively, the ship may be used to relay messages or instructions to the submarine if required.

## Submarine Activity

### Exercise Joint Warrior 112 SUBFACTS AREAS ACTIVATION GRID

|                           | 2 OCT       |             | 3 OCT       |             | 4 OCT       |             | 5 OCT       |             | 6 OCT       |             | 7 OCT       |             | 8 OCT       |             | 9 OCT       |             | 10 OCT      |             | 11 OCT      |             | 12 OCT      |             | 13 OCT      |             |
|---------------------------|-------------|-------------|-------------|-------------|-------------|-------------|-------------|-------------|-------------|-------------|-------------|-------------|-------------|-------------|-------------|-------------|-------------|-------------|-------------|-------------|-------------|-------------|-------------|-------------|
|                           | SUN         |             | MON         | TUE         | WED         | THR         | FRI         | SAT         | SUN         | MON         | TUE         | WED         | THR         | SUN         | MON         | TUE         | WED         | THR         | SUN         | MON         | TUE         | WED         | THR         |             |
| Active Time<br>Period BST | 0001 - 0800 | 0800 - 1600 | 1600 - 2359 | 0001 - 0800 | 0800 - 1600 | 1600 - 2359 | 0001 - 0800 | 0800 - 1600 | 1600 - 2359 | 0001 - 0800 | 0800 - 1600 | 1600 - 2359 | 0001 - 0800 | 0800 - 1600 | 1600 - 2359 | 0001 - 0800 | 0800 - 1600 | 1600 - 2359 | 0001 - 0800 | 0800 - 1600 | 1600 - 2359 | 0001 - 0800 | 0800 - 1600 | 1600 - 2359 |
|                           |             |             |             |             |             |             |             |             |             |             |             |             |             |             |             |             |             |             |             |             |             |             |             |             |
|                           |             |             |             |             |             |             |             |             |             |             |             |             |             |             |             |             |             |             |             |             |             |             |             |             |
| ORSAY                     |             |             | A           | A           | A           |             |             |             |             |             |             |             |             |             |             |             |             |             |             |             | A           | A           | A           | A           |
| N.CHANNEL                 |             |             | A           | A           | A           |             |             |             |             |             |             |             |             |             |             |             |             |             |             |             |             | A           | A           | A           |
| HEBRIDES                  |             |             |             | A           | A           | A           | A           | A           |             | A           | A           | A           | A           | A           | A           | A           | A           | A           | A           | A           | A           | A           | A           | A           |
| MINCH                     |             |             |             | A           | A           | A           | A           | A           |             | A           | A           | A           | A           | A           | A           | A           | A           | A           | A           | A           | A           | A           | A           | A           |
| UIST                      |             |             |             | A           | A           | A           |             |             |             | A           | A           |             |             |             |             |             |             |             |             |             | A           | A           | A           | A           |
| LEWIS                     |             |             |             |             |             |             |             |             |             |             |             |             |             |             |             |             |             |             |             |             |             |             |             |             |
| PENTLAND                  |             |             |             |             |             |             |             |             |             |             |             |             |             |             |             |             |             |             |             |             |             |             |             |             |
| SKERRY                    |             |             |             |             |             |             |             |             |             |             |             |             |             |             |             |             |             |             |             |             |             |             |             |             |
| DEEP 1                    |             |             |             |             |             |             |             |             |             |             |             |             |             |             |             |             |             |             |             |             |             |             |             |             |
| DEEP 2                    |             |             |             |             |             |             |             |             |             |             |             |             |             |             |             |             |             |             |             |             |             |             |             |             |
| DEEP 3                    |             |             |             |             |             |             |             |             |             |             |             |             |             |             |             |             |             |             |             |             |             |             |             |             |
| SHETLAND                  |             |             |             |             |             |             |             |             |             |             |             |             |             |             |             |             |             |             |             |             |             |             |             |             |
| MORAY                     |             |             |             |             |             |             |             |             |             |             |             |             |             |             |             |             |             |             |             |             |             |             |             |             |
| FORTH                     |             |             |             |             |             |             |             |             |             |             |             |             |             |             |             |             |             |             |             |             |             |             |             |             |
| TYNE                      |             |             |             |             |             |             |             |             |             |             |             |             |             |             |             |             |             |             |             |             |             |             |             |             |

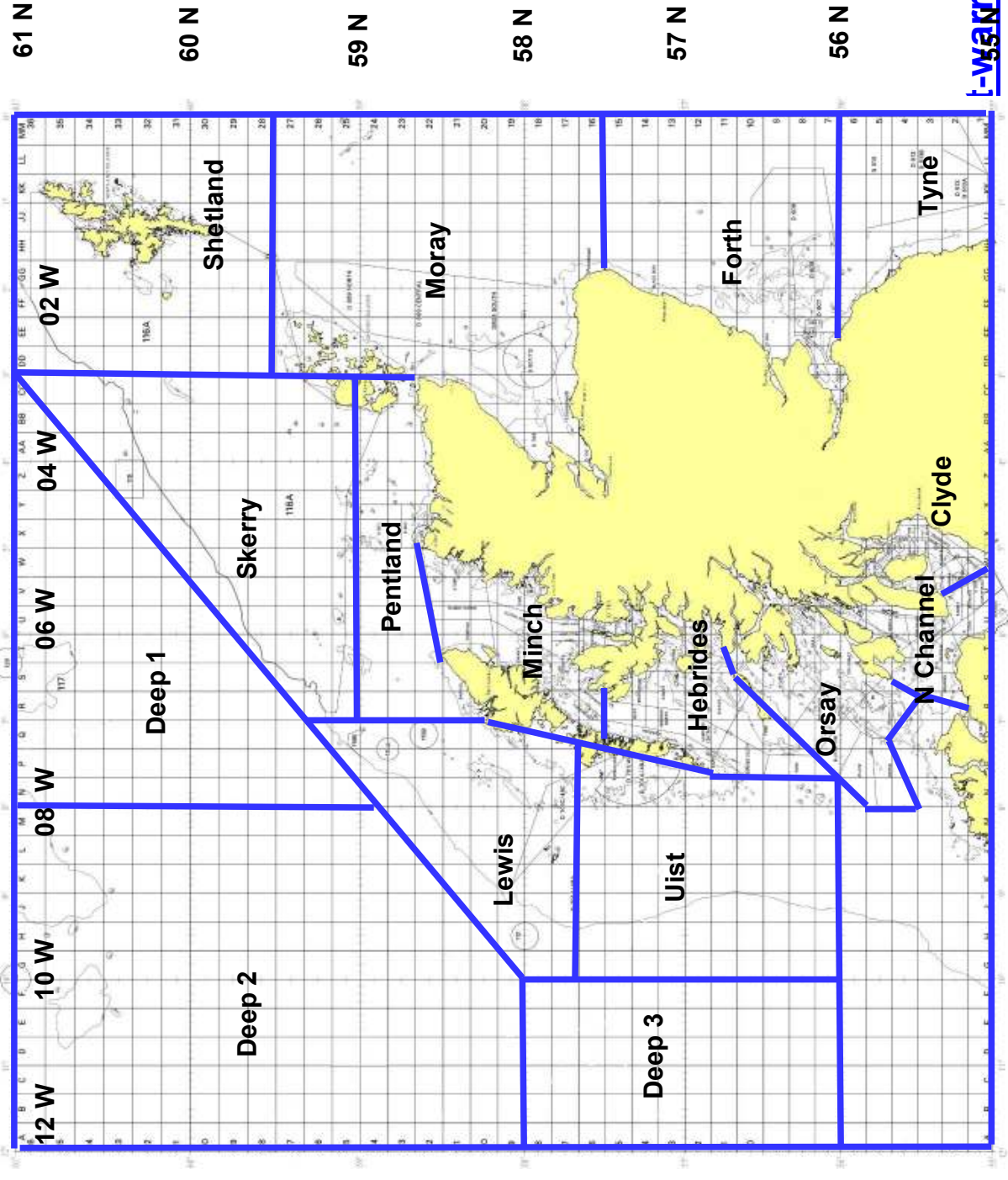
The planned activity in the JW SUBFACTS AREAS is indicated by the letter **A** in the grid above. There may be changes to this planned activity. Daily SUBFACTS Broadcasts will contain the most up to date information regarding the activation of the areas.

[www.secret-bases.co.uk/secret3.htm#joint-warrior](http://www.secret-bases.co.uk/secret3.htm#joint-warrior)

## Submarine Activity

[www.secret-bases.co.uk/secret3.htm#joint-warrior](http://www.secret-bases.co.uk/secret3.htm#joint-warrior)

Submarine Activity



JW SUBFACTS  
Area Groupings

**SCOTTISH EXERCISE AREAS – JW SUBFACTS GROUPING**

**CLYDE**

BALLANTRAE  
AILSA  
STAFNISH  
PLADDA  
TURNBERRY  
DAVAAR  
LAMLASH  
GOIL  
COVE

AYR  
BRODICK  
IRVINE  
LAGGAN  
GARROCH  
LOCHRANZA  
SKIPNESS  
ROSNEATH

TARBERT  
MINARD  
FYNE  
WEST KYLE  
EAST KYLE  
CUMBRAE  
STRIVEN  
GARELOCH

**ORSAY**

STAFFA  
MULL  
BLACKSTONE  
MACKENZIE

EIGG  
JURA SOUND  
PLACE  
ORSAY

COLONSAY  
LINNHE  
BOYLE

**NORTH CHANNEL**

ISLAY  
EARADALE  
RATHLIN  
MAGEE  
PEEL  
TORR

OTTER  
KINTYRE  
MAIDEN  
BEAUFORT  
MERMAID

GIGHA  
SKERRIES  
CORSEWALL  
ARDGLASS  
SANDA

**HEBRIDES**

USHENISH  
CANNA  
HEBRIDES NORTH  
TIREE  
BARRA

NEIST  
RHUM  
HEBRIDES CENTRAL  
HAWES  
FORD

BRACADALE  
SLEAT  
HEBRIDES SOUTH  
EIGG

**MINCH**

RONA NORTH  
RAASAY  
SHIANT  
MINCH SOUTH  
LOCHMADDY

RONA SOUTH  
TIUMPAN  
EWE  
PORTREE  
DUNVEGAN

RONA WEST  
STOER  
MINCH NORTH  
TRODDAY  
CROWLIN

## **Warship Activity**

### **VHF Challenges**

1. In light of ever changing threats to our Armed Forces, military ships maintain a detailed plot of maritime activity in their vicinity, which includes establishing the identity of small fishing vessels. This can be achieved visually from helicopters or by challenges on IMM VHF radio by ships. Mariners are advised that warships from various Allied Nations will be conducting such reconnaissance and challenges. Areas likely to be affected are the Clyde, North Channel, South of the Sea of Hebrides, the Sea of Hebrides, the Little Minch, North Minch, the area near Cape Wrath, Loch Eriboll and the Outer Hebrides. Mariner's co-operation during this time would be much appreciated. A small number of contracted civilian vessels including high speed craft will be operating in the vicinity of the Minches in support of this training task. Every effort will be made to avoid interference to fishing vessels.

### **Smoke Screens**

2. Exercise smoke screens will be operated in Clyde exercise areas Laggan, Garroch, Brodick, Irvine, Lamlash and Ayr on Tuesday 4 October between 0700 and 1900. These smoke screens are non-toxic and will not be persistent in nature. The smoke screens will extend to a height of approximately 1000ft with a length of approximately 1000yds and will dissipate approximately 5 minutes after production.



## Minewarfare Activity

1. Mine Counter Measures (MCM) vessels will conduct minehunting exercises using sonar and towed sweeps to look for potential mines both on the seabed and moored to the seabed that are subsequently investigated by remote controlled submersible vehicles and divers.
2. Towed sweeps for minesweeping will be used during JW 112.
3. All participating MCM vessels will be thoroughly briefed on local fishing operations in advance of the exercise and are instructed to make early liaison calls to fishing vessels on VHF. Skippers of fishing vessels operating in the vicinity of these ships are encouraged to talk to them and discuss intentions.
4. If any difficulty is experienced a call should be made to the Duty Submarine Controller at CTF 311 OPS ROOM on the "Fishermen's Hotline" number, 01923 956366. This line is permanently manned.
5. The following MCM vessels will participate in Ex JW 112:

| <u>Name</u>    | <u>Nationality</u> | <u>Pennant No.</u> |
|----------------|--------------------|--------------------|
| HMS PENZANCE   | British            | M106               |
| HMS CATTISTOCK | British            | M31                |
| HMS LEDBURY    | British            | M30                |
| HMS BLYTH      | British            | M111               |
| HMS HURWORTH   | British            | M39                |
| ENS TASUJA     | Estonian           | A432               |
| FGS UEBERRHERN | German             | M1095              |
| ORP FLAMING    | Polish             | 621                |
| HNOMS MAALOEY  | Norwegian          | M342               |

6. Inert mines have been laid for the exercise, in the following areas:

- a. **LOCH EWE** (see chartlet 1)

All areas within Loch Ewe between latitudes 57 52.28N and 57 49.20N

- b. **LOCH EWE APPROACH** (see chartlet 1)

1000 yards either side of a line:   A.    58 00.00N   005 46.00W  
  B.    57 55.00N   005 43.80W

- c. **CARN SKERRIES/HORSE ISLAND** (see chartlet 1)

A.    57 57.94N   005 20.08W  
B.    57 57.55N   005 20.57W  
C.    57 58.44N   005 23.08W  
D.    57 58.84N   005 22.58 W

- d. **EILEAN DUBH** (see chartlet 1)
- A. 57 59.23N 005 25.60W
  - B. 57 58.85N 005 25.50W
  - C. 57 58.75N 005 26.84W
  - D. 57 59.60N 005 26.90W
- e. **PRIEST ISLAND (SOUTH)** (see chartlet 1)
- A. 57 56.91N 005 31.48W
  - B. 57 56.50N 005 31.82W
  - C. 57 56.83N 005 33.32W
  - D. 57 57.27N 005 33.00W
- f. **GRUINARD BAY APPROACH** (see chartlet 1)
- A. 57 56.24N 005 28.57W
  - B. 57 55.80N 005 28.91W
  - C. 57 56.25N 005 30.70W
  - D. 57 56.68N 005 30.46W
- g. **GRUINARD BAY** (see chartlet 1)
- A. 57 54.00N 005 29.61W
  - B. 57 52.80N 005 29.61W
  - C. 57 52.80N 005 30.80W
  - D. 57 53.02N 005 30.80W
  - E. 67 53.02N 005 30.00W
  - F. 57 54.00N 005 30.00W
- h. **BROAD BAY** (see chartlet 3)
- A. 58 16.60N 006 14.60W
  - B. 58 16.60N 006 12.20W
  - C. 58 15.40N 006 12.20W
  - D. 58 15.40N 006 12.20W
- i. **LOCH ERIBOLL APPROACH** (see chartlet 4)
- A. 58 42.97N 004 42.00W
  - B. 58 34.00N 004 36.72W
  - C. 58 31.96N 004 38.16W
  - D. 58 29.70N 004 41.30W
- j. **LOCH ERIBOLL ANCHORAGE (NORTH)** (see chartlet 4)

## Minewarfare Activity

- A. 58 33.30N 004 38.00W
- B. 58 33.30N 004 36.40W
- C. 58 32.00N 004 36.40W
- D. 58 32.00N 004 38.00W

7. The planned minelay and recovery programme:

- a. **Minelay.** Has been completed.
- b. **Mine recovery.** Mines will be recovered throughout JW 112.

8. Minehunters will conduct live firings of mine disposal charges in the following area:

- a. **MINE DISPOSAL CHARGE FIRING AREA** (see chartlet 1)

- A. 57 57.58N 005 33.93W
- B. 57 57.85N 005 33.93W
- C. 57 58.25N 005 31.97W
- D. 57 57.02N 005 31.97W

- b. **DIVER PLACED CHARGES FIRING AREA** in Loch EWE will take place within a circle, with a radius of 200m, centred on 57 48.200N – 005 38.900W.

9. Minesweeping will take place during JW 112 and will be restricted to the following corridors:

- a. **EAST SHIANT BANK** (see chartlet 2)

- 1000 yds either side of a line:
- A. 57 56.38N 006 08.40W
  - B. 58 02.80N 005 59.60W

- b. **LOCH EWE APPROACH** (see chartlet 1/2)

- 1000 yds either side of a line:
- A. 58 00.00N 005 46.00W
  - B. 57 55.00N 005 43.80W

To enable ships to turn at the end of the corridor, turning areas have been added. The sweeping corridor will therefore be within the following co-ordinates:

- |              |            |              |            |
|--------------|------------|--------------|------------|
| A. 57 53.60N | 005 44.00W | B. 57 54.30N | 005 40.40W |
| C. 57 55.10N | 005 41.00W | D. 57 55.10N | 005 41.80W |
| E. 58 00.20N | 005 45.00W | F. 58 00.38N | 005 44.10W |
| G. 58 01.28N | 005 44.60W | H. 58 00.60N | 005 48.40W |
| I. 57 59.70N | 005 47.80W | J. 57 59.90N | 005 46.82W |
| K. 57 54.75N | 005 43.62W | L. 57 54.55N | 005 44.60W |

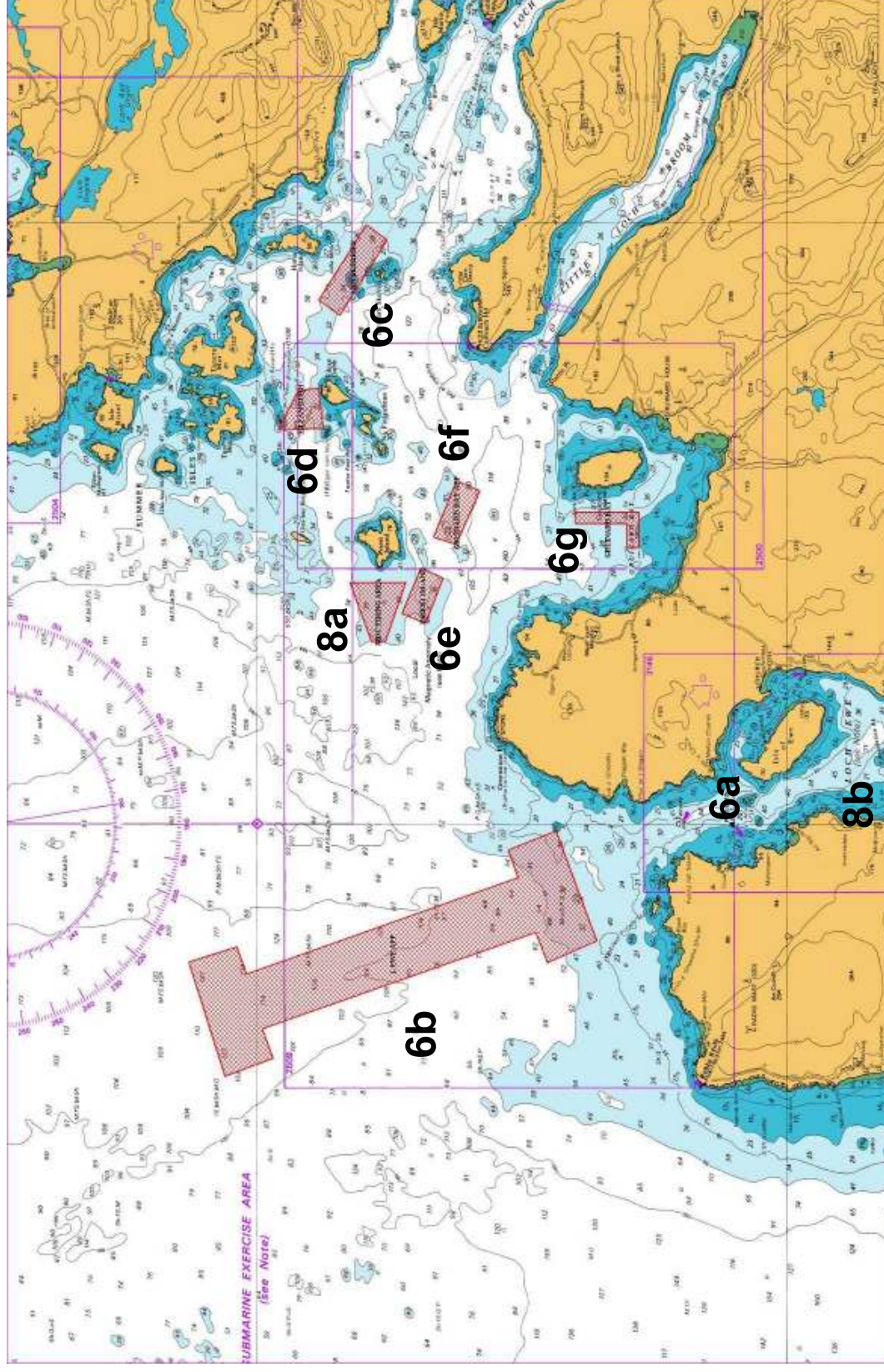
10. Liaison between the MoD and appropriate fishermen's associations/organisations, in some cases with individual owners/skippers, HM Coastguard and Marine Scotland have

[www.secret-bases.co.uk/secret3.htm#joint-warrior](http://www.secret-bases.co.uk/secret3.htm#joint-warrior)

## **Minewarfare Activity**

been made to use the above areas. Should anyone consider that their organisation/association should be included in this process in future please contact Lieutenant Commander Matt Offord (FOSNNI SMCDO) on 01436 674321 extn 6510.

## Minewarfare Activity

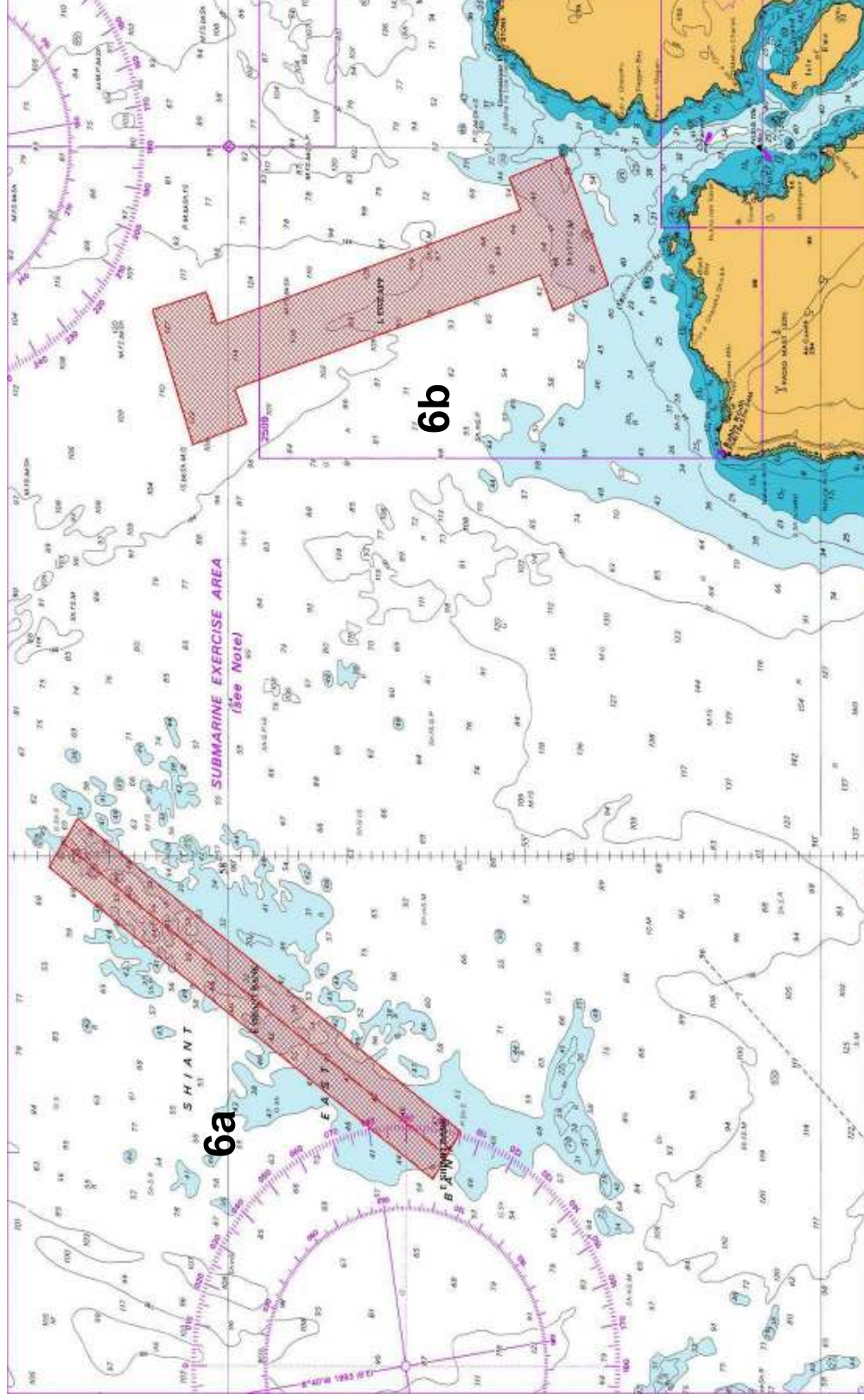


[www.secret-bases.co.uk/secret3.htm#joint-warrior](http://www.secret-bases.co.uk/secret3.htm#joint-warrior)



## Minewarfare Activity

### Chartlet 1



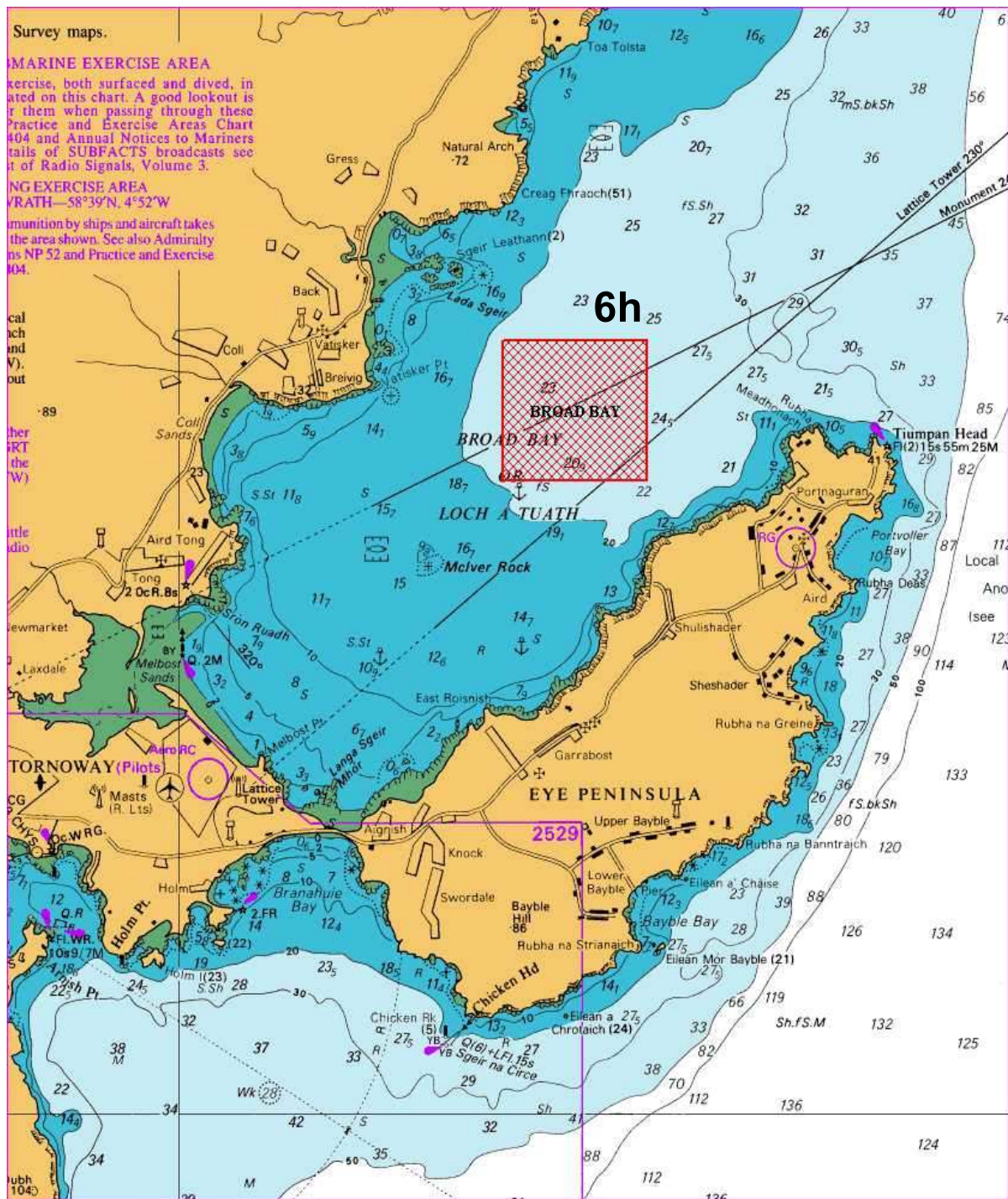
[www.secret-bases.co.uk/secret3.htm#joint-warrior](http://www.secret-bases.co.uk/secret3.htm#joint-warrior)

## Minewarfare Activity

### Chartlet 2

[www.secret-bases.co.uk/secret3.htm#joint-warrior](http://www.secret-bases.co.uk/secret3.htm#joint-warrior)

## Minewarfare Activity

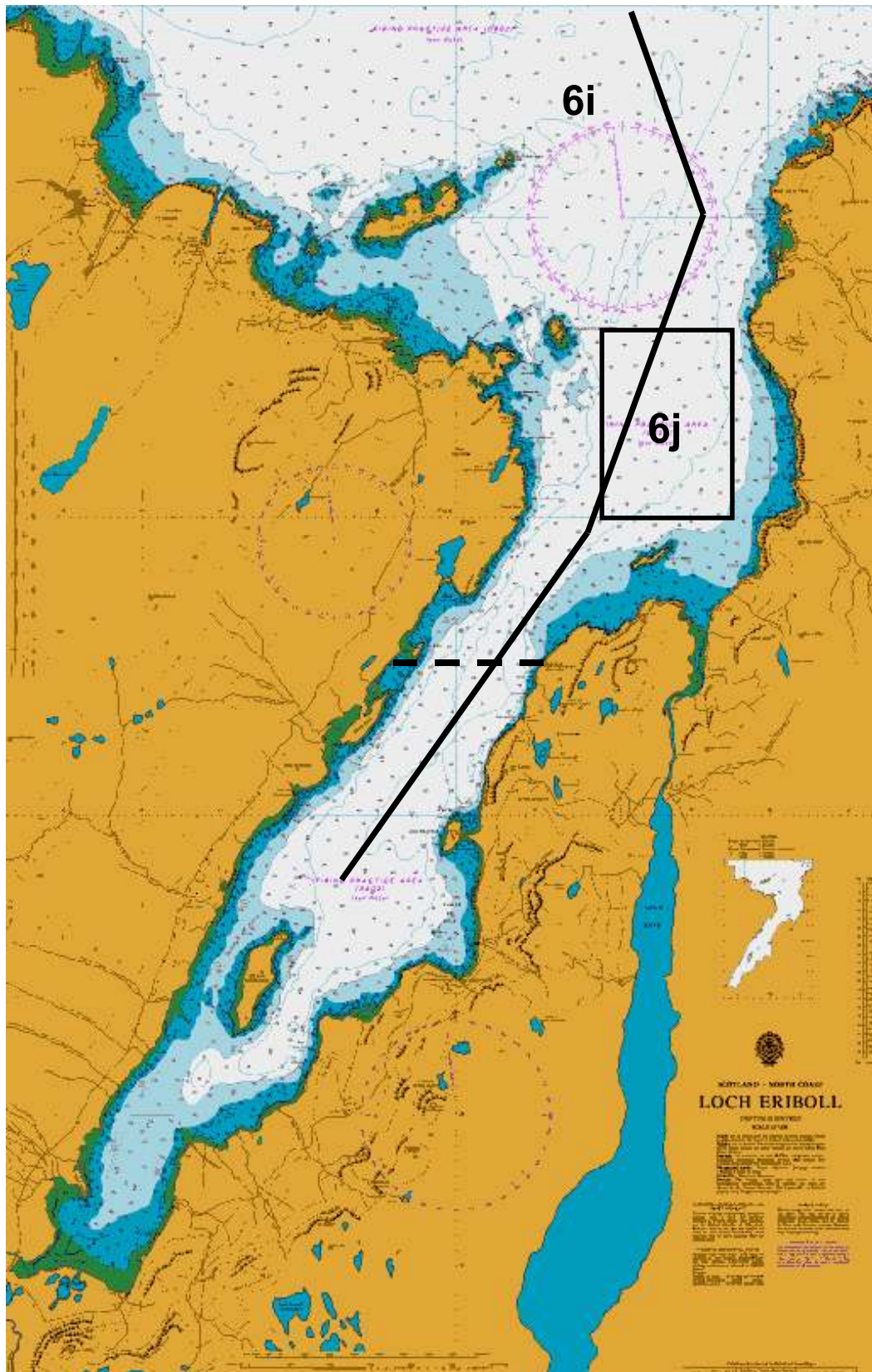


### Chartlet 3

[www.secret-bases.co.uk/secret3.htm#joint-warrior](http://www.secret-bases.co.uk/secret3.htm#joint-warrior)



## Minewarfare Activity



## Minewarfare Activity

### Chartlet 4

## **Live Firing and Gunnery**

1. During Joint Warrior, Cape Wrath Range, including Garvie Island (An Garbh-eilean) will be active with various combinations of air bombardment, naval gunfire support and helicopter operations. In addition a Joint Warrior Firing and Danger Area will be activated for offshore gunnery. The Gunfacts and JW Offshore Firing Areas Activation Grid on the following page shows the areas and time periods where gunnery associated with Joint Warrior is forecast to take place. The daily GUNFACTS Broadcast by the Coastguard and Cape Wrath Range will provide notification of the actual areas where all the gunnery activity is taking place.
2. Joint Warrior Firing and Danger Area coordinates are in the accompanying chartlet.
3. It is mandatory that vessels in the vicinity of the Cape Wrath Range keep a listening watch on VHF Channel 16. Further information regarding firing at can be obtained by telephoning:

**Cape Wrath Information Line on  
FREEPHONE 0800 833300.**

**or 01862 892185**

The number will provide specific information about active/non-active periods and when the Range road (U70) will be open/closed for public access.

## Live Firing and Gunnery

Exercise Joint Warrior 112

### GUNFACTS AND JW OFFSHORE FIRING AREAS ACTIVATION GRID

|                           | 3 OCT     | 4 OCT     | 5 OCT     | 6 OCT     | 7 OCT     | 8 OCT     | 9 OCT     | 10 OCT    | 11 OCT    | 12 OCT    | 13 OCT    |
|---------------------------|-----------|-----------|-----------|-----------|-----------|-----------|-----------|-----------|-----------|-----------|-----------|
|                           | MON       | TUE       | WED       | THR       | FRI       | SAT       | SUN       | MON       | TUE       | WED       | THR       |
| Cape Wrath Range (Ashore) | 0100-2359 | 0100-2359 | 0100-2359 | 0100-2359 | 0100-2359 | 0100-2359 | 0100-2359 | 0100-2359 | 0100-2359 | 0100-2359 | 0100-2359 |
| Cape Wrath D801           |           | 1400-1800 |           |           |           |           |           |           |           |           |           |
| Cape Wrath D802           | 0930-2330 | 0730-1830 | 1130-1900 | 1030-2000 |           |           |           | 0730-2359 | 0730-2359 |           |           |
| Garvie Island D803        | 0930-2330 | 0730-1830 | 1130-1900 | 1030-2000 |           |           |           | 0730-2359 | 0730-2359 |           |           |
| JW Danger Area J1         |           | 0930-1600 |           |           |           |           |           |           |           |           |           |
| JW Danger Area J4         |           |           | 1300-1430 |           |           |           |           |           |           |           |           |
| JW Danger Area J5         |           |           | 1300-1430 |           |           |           |           |           |           |           |           |
| Clyde Areas D 509         | 0900-2000 |           |           |           |           |           |           |           |           |           |           |

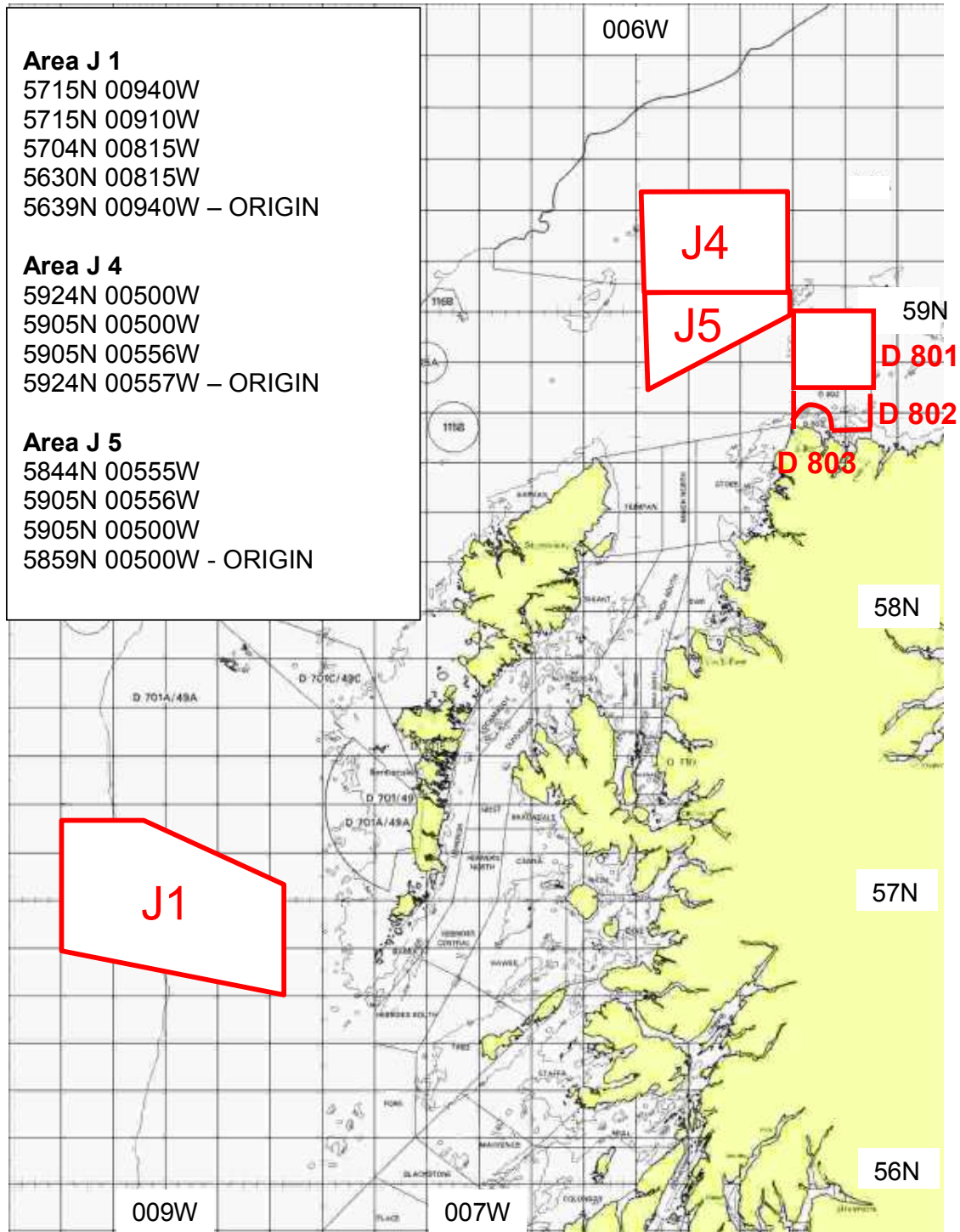
[www.secret-bases.co.uk/secret3.htm#joint-warrior](http://www.secret-bases.co.uk/secret3.htm#joint-warrior)

## Live Firing and Gunnery

The planned times of firings at Cape Wrath Range and JW Firing areas is indicated in the grid above. There may be changes to this planned activity. Daily GUNFACTS Broadcasts and Cape Wrath Range Broadcasts will contain the most up to date information regarding the activation of the areas. Times are Local.

[www.secret-bases.co.uk/secret3.htm#joint-warrior](http://www.secret-bases.co.uk/secret3.htm#joint-warrior)

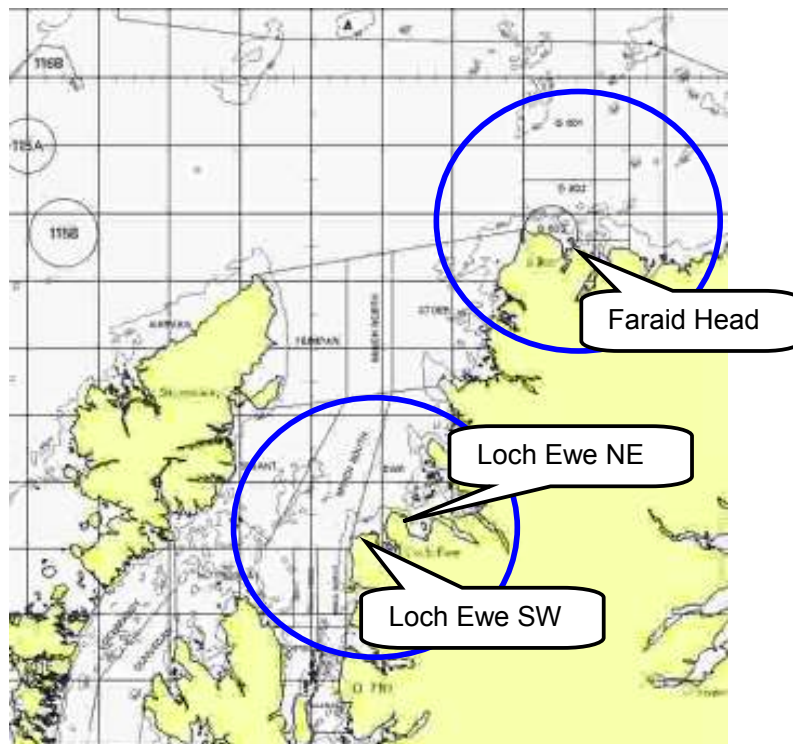
JOINT WARRIOR FIRING AND DANGER AREAS





## Denial of GPS Service

1. Denial of GPS services through the jamming of the GPS signal is a real and present danger to both military and civilian maritime and air users. The ability to conduct jamming is spread throughout the modern world. Naval Forces are required to train under such conditions in order to demonstrate the effects it has systems and to train personnel in other modes of operating.
2. Jamming of GPS signals will affect equipment using GPS within 20 nautical mile line of sight of the jamming sites. These are located at:
  - a. Faraid Head - 58 36.2N 004 46.4W
  - b. Loch Ewe NE - 57 51.9N 005 41.1W
  - c. Loch Ewe SW - 57 47.2N 005 47.5W



3. The planned times GPS Denial are shown in the table below. These timings are also promulgated in; Notice to Airmen, Notice to Mariners, WZ Navigation Warnings. The Coastguard will make a Sécurité broadcasts before and after each jamming event in the local area. During the exercise users may also contact the Joint Warrior Controller on: 01436 674321 ext. 4372.





## Denial of GPS Service

Exercise Joint Warrior 112

### GPS DENIAL TIME TABLE

|                     | 3 OCT | 4 OCT                  | 5 OCT                  | 6 OCT                  | 7 OCT                  | 8 OCT  | 9 OCT     | 10 OCT                 | 11 OCT                              | 12 OCT                              | 13 OCT                 |
|---------------------|-------|------------------------|------------------------|------------------------|------------------------|--|-----------|------------------------|-------------------------------------|-------------------------------------|------------------------|
|                     | MON   | TUE                    | WED                    | THR                    | FRI                    | SAT  | SUN       | MON                    | TUE                                 | WED                                 | THR                    |
| Faraid Head         |       | 1200-1300<br>1830-1930 | 1700-1800              | 1300-1400<br>1800-1900 |                        | 0900-1000<br>1100-1200<br>1300-1430              | 1200-1300 | 1200-1300<br>1700-1800 | 1200-1300<br>1700-1800              |                                     |                        |
| Loch Ewe<br>SW Site |       |                        | 0930-1130              | 1030-1230<br>1700-1900 | 0600-0800<br>1500-1600 | 0700-0800<br>1000-1100<br>1300-1400<br>1600-1700 | 1200-1400 | 1430-1730<br>2100-2300 | 0700-0800<br>1000-1100<br>1600-1700 | 1000-1100<br>1500-1600<br>2100-2200 | 0630-0730<br>0900-1000 |
| Loch Ewe<br>NE Site |       |                        | 0930-1130<br>1500-1700 | 1030-1230<br>1700-1900 | 0600-0800<br>1500-1600 | 0700-0800<br>1000-1100<br>1300-1400<br>1600-1700 | 1200-1400 | 1430-1730<br>2100-2300 | 0700-0800<br>1000-1100<br>1600-1700 | 1000-1100<br>1500-1600<br>2100-2200 | 0630-0730<br>0900-1000 |

Times are Local.

## Unexploded Ordnance Advice

1. The following general advice is offered to anyone discovering anything believed to be unexploded ordnance:

|                  |   |
|------------------|---|
| <b>DIVERS</b>    | DO NOT TOUCH  |
| <b>FISHERMEN</b> | Contact the coastguard. If this is not possible, lay the item in about 60ft of water, away from shipping routes and mark the position with a float. |
| <b>EVERYONE</b>  | DO NOT TOUCH – dial 999 for coastguard or Police.   |

## Contact Telephone Numbers

|  |                               |
|--|-------------------------------|
| <b>UNEXPLODED ORDNANCE (FLEET DUTY CONTROLLER)</b> | <b>01923 956366</b>           |
| <b>FISHERMAN'S HOTLINE (FLEET DUTY CONTROLLER)</b> | <b>01923 956366</b>           |
| <b>JOINT WARRIOR CONTROLLER</b>                    | <b>01436 674321 Extn 4372</b> |
| <b>CAPE WRATH INFORMATION LINE</b>                 | <b>FREEPHONE 0800 833300</b>  |

If future versions of this brief are not required please contact:

Joint Tactical Exercise Planning Staff, JHQ Room 301, Northwood Headquarters,  
Sandy Lane, NORTHWOOD, Middlesex HA6 3HP

Telephone: 01923 958788.

E-Mail: JTEPS-SM-SO2@mod.uk

[www.secret-bases.co.uk/secret3.htm#joint-warrior](http://www.secret-bases.co.uk/secret3.htm#joint-warrior)